

GRANDEUR Installation Guide:
SPC Vinyl Herringbone



Please read all information on this page thoroughly for information regarding storage, preparation for and installation of your new vinyl floors.

BEFORE THE INSTALLATION

CONDITIONING

Your SPC vinyl flooring should be stored in the room they are to be installed for a minimum of 48 hours prior to installation. During this time, the planks should remain in the carton on a flat surface, room temperature should be maintained between 65° and 80°F (18° to 27°C) and humidity between 30-50%. It is also recommended to cut the carton on the short side to allow airflow inside the box.

PREPARATION

- Make sure that the subfloor is smooth, flat, dry, clean and solid. Any adhesive residue or carpet staples should be removed prior to installation.
- SPC vinyl flooring can be installed directly on concrete (or anhydrite) subfloor and over most existing hard floor coverings providing they are smooth, flat, dry, clean and solid. Do not install over carpet or any other soft subfloors.
- Subfloors should be flat within a tolerance of 1/16" (2 mm) over a span

of 4 feet (1,2 m). Any unevenness over 1/16" (2 mm) must be sanded down or leveled with a floor leveler. Voids or humps in the subfloor will prevent the planks from locking properly.

- Ceramic tiles should be made smooth by applying a cementitious overlay such as patching or leveling compound to smooth out grout joints.
- Although SPC vinyl planks are waterproof, they are not to be used as a moisture barrier. Your subfloor should be completely dry prior to installation of the engineered vinyl flooring (<2,5% moisture degree for concrete subfloor, <0.5% for anhydrite). Moisture will not damage the product but it might get into walls and structure of the home.
- The final responsibility for determining if the subfloor is well prepared and dry enough for installation of the SPC vinyl flooring lies with the floor covering installer. It is recommended to use certified flooring installers and/or trained by UFL.
- The largest recommended installation area is 3000 ft² (300 m²). It is recommended to use 1/4" (6 mm) expansion gap in the areas longer/wider than 65 feet (20 m) and in door openings, especially if there are temperature differences between areas.

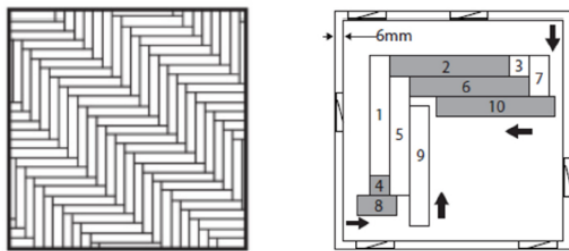
INSTALLATION

Diagonal Herringbone

- This method refers to installing the flooring in the herringbone pattern at the 45 degree angle across the room.

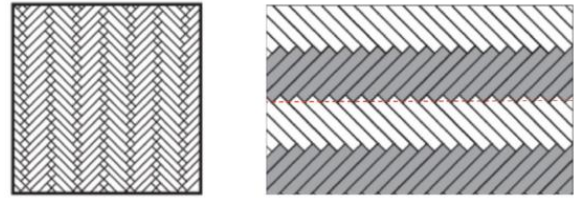
1610 SISMET RD,
MISSISSAUGA, ON L4W 1R4

- Draw a line at a 45 degree angle to the left corner of the room. This line will be used to align the diagonal herringbone pattern.
 - Take an A plank and lay it down. The tongues on both short and long side should be facing walls.
- After that take a B plank and place the short side tongue perpendicularly to the groove of plank A.
- For the next planks (3rd plank is an A plank and 4th plank is B plank) you will have to make a cutting before you fit them. Measure the planks according to the picture below and make a cutting.
 - Once you place 3rd and 4th planks, refer to the picture below and continue the sequence.
 - To finish up the installation, repeat the same process cutting the planks accordingly at the end of the room. Do not forget to leave 1/4" (6 mm) of gap from the wall.

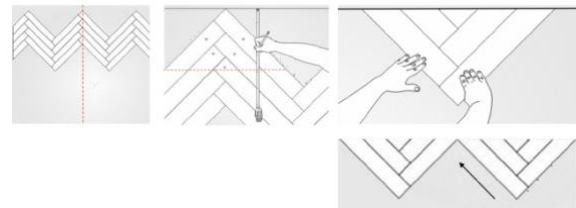


Classic herringbone

- This method refers to installing the flooring in the classic herringbone pattern.
- Start with drawing the main line to divide your room in half. This line will be your main axis to install the floor.



- In order to proceed with the installation, you have to make starting sets. Starting set consists of 5 pieces (3 pieces of an A plank and 2 pieces of a B plank) that can be formed into triangles. Starting sets can be made by installing the first few rows of the herringbone pattern along the main line that you set up earlier and then cutting the planks properly.
- Once you make the first set, you can cut additional sets by following the same process. Make sure that you cut one piece from one plank. The amount of starting sets depends on the width of your room. You can connect starting sets by one full plank.



- To finish up the installation, repeat the same process cutting the planks accordingly at the end of the room. Do not forget to leave 1/4" (6 mm) of gap from the wall.

IMPORTANT

- SPC vinyl flooring may be installed over water-based radiant-heated subfloors according to above-mentioned instructions, provided the surface temperature of the system

1610 SISMET RD,
MISSISSAUGA, ON L4W 1R4

does not exceed 81°F (27°C). Due to the speed of sudden temperature changes, which has potential to negatively affect vinyl flooring construction, it is not recommended to install over electrical radiant heating systems. This will not be covered by the manufacturer's warranty. Only radiant heating systems using water are acceptable.

- When installing in a bathroom, please use professional silicone caulking to fill the expansion space at the tub, shower, and all wet areas to prevent surface water seepage under the floor.
- It is not recommended to install SPC vinyl flooring in areas exposed to intense direct sunlight and temperature greater than 140°F (60°C).
- Above installation instructions are for SPC vinyl flooring with click (floating installation).

- make sure pets have nails clipped regularly
- do not use abrasive cleaners, bleach or wax to maintain the floor
- do not drag or slide heavy objects across the floor

AFTER INSTALLATION

Care and maintenance

In order to maintain your SPC vinyl flooring in good condition:

- keep the temperature in the room between 65° and 80°F (18° to 27°C)
- sweep or vacuum daily using soft bristle attachments
- clean up spills and excessive liquids immediately
- damp mop as needed and use cleaners recommended for no-wax vinyl floors
- protect floor from constant direct sunlight
- use proper floor protection devices such as felt protectors under furniture and a mat at entrance ways